

## PG-SIG BOARD

### Co-Chairs

Bonney Reed, PhD  
Emory University School of Medicine  
Margo Szabo, PhD  
Children's Hospital of Philadelphia

### Co-Chairs Elect

Jessica Buzenski, PhD  
Emory University School of Medicine  
Lauren Potthoff, PhD  
Lurie Children's Hospital

### Past Co-Chairs

Lindsey Burrell, PhD  
Atlanta Children's Center  
Cindy Kim, PhD ABPP  
Children's Hospital of Orange County

### Secretary

Cat Naclerio, PsyD  
Children's Hospital Colorado

### Membership Coordinator

Scott Wagoner, Ph.D.  
Indiana University Health

### Members at Large (MAL)

**MAL Education**  
Maggie Stoekle, Ph.D.  
Yale Child Study Center

### MAL Research

Elizaveta Bourchtein, PhD  
Michigan Medicine

### MAL Clinical

Jacklyn Stellway, Psy.D.  
Oregon Health and Sciences University

### Technology Manager

Jillian Austin, PhD  
Cincinnati Children's Hospital

### Student Representatives

**Education**  
Cecelia Nelson  
Cincinnati Children's Hospital

**Research**  
Abby Roberts  
Cincinnati Children's Hospital

**Clinical**  
Deanna Al-Hammori  
East Carolina University

### Inside this issue:

Education & Clinical 2

NASPGHAN 2023 3

New research 4

Training and jobs 5

FALL NEWSLETTER 2023  
PEDIATRIC GASTROENTEROLOGY SPECIAL INTEREST GROUP (PG SIG)  
AN OFFICIALLY RECOGNIZED SIG WITHIN THE SOCIETY OF PEDIATRIC PSYCHOLOGY (DIVISION 54, APA)

# FALL NEWSLETTER 2023

PEDIATRIC GASTROENTEROLOGY SPECIAL INTEREST GROUP (PG SIG)  
AN OFFICIALLY RECOGNIZED SIG WITHIN THE SOCIETY OF PEDIATRIC PSYCHOLOGY (DIVISION 54, APA)

FALL NEWSLETTER 2023

September 2023

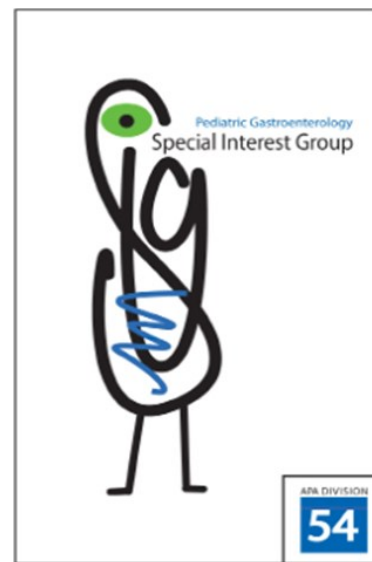
## A Message from our Co-Chairs

As we embark on our second year as PG SIG Co-Chairs, we are excited to work with our newly appointed Board Members to build upon the successes of our predecessors and take on new initiatives in the upcoming year.

We are grateful to have had tremendous interest in our Board Positions, and you will be introduced to each new Board Member in this issue. The transition into leadership for our new Board Members was greatly facilitated by the Standard Operating Procedure documents that we created last year for each position. Please don't hesitate to reach out to any of our new Board Members with ideas or questions you may have as a member of PG SIG.

If you don't already follow **@pedsgastropsych** on X, formerly known as Twitter, please consider doing so for updates on relevant conferences, research, and clinical training opportunities. It was great to see all the conversation from the ANMS 2023 conference in Austin, especially with regards to psychogastroenterology! We will continue to have monthly journal club and clinical case conferences, so please attend as much as possible and learn from this valuable collaboration opportunity.

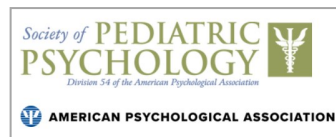
SPPAC 2024 will be held in New Orleans, with the call for abstracts being open August 16<sup>th</sup> through October 16<sup>th</sup>. We will plan to have our annual PG SIG meeting virtually prior to the meeting in New Orleans where we will plan to



have a social gathering—stay tuned!

We look forward to the year ahead!

Margo & Bonney  
Co-Chairs

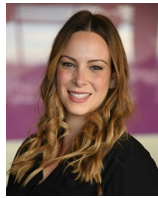


Follow us on Twitter

@pedsgastropsych



## Meet Our New Board Members



Cat Naclerio, Psy.D.  
**Secretary**  
Children's  
Hospital  
Colorado



Jillian Austin, Ph.D.  
**Technology Manager**  
Cincinnati Children's  
Hospital



Scott Wagoner,  
Ph.D.  
**Membership  
Coordinator**  
Indiana University



Maggie Stoeckel, Ph.D.  
**MAL Education**  
Yale Child Study Center



Jaclyn Stellway, Psy.D.  
**MAL Clinical**  
Oregon Health  
and Sciences  
University



Elizaveta Bourchtein, Ph.D.  
**MAL Research**  
Michigan Medicine



Cecelia Nelson  
**Student Rep—Education**  
Cincinnati Children's  
Hospital



Deanna Al-Hammor  
**Student Rep—Clinical**  
Nemours Children's  
Health



Abby Roberts  
**Student Rep—Research**  
Cincinnati Children's  
Hospital

## Education & Clinical Updates

PG-SIG is excited to continue to offer educational virtual meetings, **now on the first Thursdays of the month from 12:00-1:00 EST** — rotating monthly between **Clinical Case Conference** and **Journal Club**.

The **PG SIG Journal Club** discusses recent journal articles that may be of interest to SIG members. In our first journal club of the season, we discussed *Sleep Problems in Pediatric Disorders of Gut Brain Interaction: A Systemic*

*Review* (Robbertz AS, Shneider C, Cohen LL, & Reed B. Sleep, 2023).

The **Clinical Case Conference** will meet next on Oct. 5th, then Dec 7th.

Students/trainees are welcome! For questions about JC, contact Dr. Maggie Stoeckel

([maggie.stoeckel@yale.edu](mailto:maggie.stoeckel@yale.edu)) and for questions about the CCC, contact Dr. Jacklyn Stellway ([stellway@ohsu.edu](mailto:stellway@ohsu.edu))

**Journal Club &  
Clinical Case Conference  
First Thursdays  
12:00-1:00 EST  
alternating months**

## \*NEW\* PG-SIG Mentorship Program

In an effort to increase access to mentorship opportunities in the field of GI Psychology, the Pediatric Gastroenterology SIG is starting a mentorship program open to both trainees and faculty. This program is targeted to folks across the “lifespan” of career development, from early stages of training to later stages of licensure and practice.

Are you a trainee interested in learning more about GI Psychology? Are you a pre-doctoral intern hoping to receive mentorship

related to career opportunities in GI? Are you a licensed psychologist seeking advice at a turning point in your career?

If you are interested in participating in the program as either a **mentor** or a **mentee**, please complete the very brief survey below:

<https://forms.gle/HtZCdtyEdCGHqzyT9>

Please feel free to reach out to Dr. Maggie Stoeckel with any questions!

## SPOTLIGHT ON NASPGHAN CONFERENCE 2023



Below are presentations that may be of particular interest to PG-SIG members. Please refer to the [official conference program](#) for updated dates/times and for all GI psychology-related content.

### Conference Talks:

#### Friday, Oct 6

##### Meet the Professor breakfasts

**7:00 AM** *Increase function and decrease medicalization*

Hannibal Person, MD, Seattle Children's Hospital, Carlo Di Lorenzo, MD, Nationwide Children's Hospital, Maggie Stoeckel, PhD, Yale University School of Medicine

##### **2:30 PM - 4:00 PM Concurrent session II**

Practicing in an era of limited resources: Tips and pitfalls

**2:30 PM** *Tips and pitfalls: What to say and do when you don't have a psychologist.* Bradley Jerson, PhD, Connecticut Children's Medical Center

Optimizing outcomes in intestinal rehabilitation

**3:32 PM** *Monitoring psychological factors in the intestinal rehab journey.* Jessica Valenzuela, PhD, ABPP, Nova Southeastern University

#### Saturday October 6<sup>th</sup>

##### Meet the Professor breakfasts

**7:00 AM** *IB-what? Evaluation and Management of IBS in IBD.* Grace

Jennifer Lee, MD, University of Michigan, Dawn Ebach, MD, University of Iowa, Michele Maddux, PhD, Children's Mercy Hospital and Clinics

##### **8:30 AM - 10:00 AM Concurrent session III**

Beyond the gut: Other presentations

**9:07 AM** *Body image, disordered eating, and weight stigma in pediatric IBD: Recommendations for healthcare professionals* Jennie David, PhD, Nationwide Children's Hospital

##### **10:30 AM - 12:00 PM Concurrent session IV**

Enhancing partnerships with patients, families and society

**11:30 AM** *Models for mental health integration in pediatric gastroenterology practices* Stephen L. Guthery, MD, University of Utah

##### **3:45 PM - 5:15 PM Concurrent Session VI**

VROOM: Vomiting, Regurgitation, Ongoing Outbursts through the Mouth

**4:22 PM VROOM: Behavioral treatment of Rumination Syndrome**

Ashley Kroon Van Diest, PhD, Nationwide Children's Hospital

### APGNN 2023 Psychology Highlights

#### Friday October 5<sup>th</sup>

##### **3:00-5:00 pm: Session V - Hot Topics**

**3:00—3:30 PM:** *Psychological Exposure Protocols for GI Conditions* Julie Snyder, Psy.D., Boston Children's Hospital

**4:00—4:30 PM:** *"But I feel fine": Strategies to support nonadherence in asymptomatic patients* Catherine Naclerio Psy.D. & Christine Reinhard, PhD, Children's Hospital Colorado

If you are attending NASPGHAN, please join for an informal social event for pediatric GI psychologists! We will meet **Friday October 6th at 6 pm PST** at the **Hilton San Diego Bayfront's Odyssey Lounge**. Please stop by to say hello!

Questions? Email Kari Baber ([baberk@chop.edu](mailto:baberk@chop.edu)) or Cindy Kim ([ckim@choc.org](mailto:ckim@choc.org))

### Poster Presentations:

**Poster Session 1** includes psychosocial topics

Some of the many posters of interest across all 3 sessions:

*Feeding Tube Weaning Through Remote Health Monitoring: An Initial Case And Adaptation of Existing Framework for an Outpatient Feeding Program.* Bakula et al.

*The Relationship of Parental Stress with the Emotional and Physical Health of Children with Inflammatory Bowel Disease.* Zimmerman et al.

*Diaper Fading Protocol to Treat Toileting Refusal: 4 Case Studies.* Begotka & Austin

*Quality Improvement Initiative to Reduce Overmedicalization for Pediatric Disorders of Gut Brain Interaction.* Szabo et al.

*When Do Parents Consider Their Kids With DGBI Better? A Focus On Missed School and Social Activities.* van Tilburg et al.

*Pain Catastrophizing is Associated with Worse Functioning in Pediatric FAPD Patients.* Miller et al.

*Enhancing Biopsychosocial Care in Pediatric Gastroenterology: 10-Year Growth of an Integrated GI Psychology Program.* Rodriguez et al.

*A Behavioral Approach to Decrease Vomiting in a Patient with Pediatric Feeding Disorder.* Knight et al.

*Treating Pediatric Functional Dysphagia with Hypnotherapy Clinical Lessons and Patient Selection.* Low Kapalu et al.

*Barriers to Treatment Adherence in Pediatric Eosinophilic Esophagitis.* Primo et al.

*Does Anti TNF Therapy Lead to Antipsychotic Therapy?* Pantone et al.

*Patient and Family Perspectives on Childhood Rumination Syndrome: It's Not in My Head.* Khoo et al.

Join the NASPGHAN organization and specific committees!

For questions, contact Drs. Kari Baber [BABERK@chop.edu](mailto:BABERK@chop.edu) and Cindy Kim [ckim@choc.org](mailto:ckim@choc.org) - psychology liaisons to NASPGHAN

## Improve Care Now (ICN) Update

[ImproveCareNow](#) is a Learning Health System dedicated to pediatric IBD, and the Social Work and Psychology (SWAP) group is our psychosocial professional group within the network, co-led by Dr. Jennie David (IBD Psychologist, Nationwide Children's) and Noelle Moore (Social Worker, Nemours Jacksonville).

SWAP's goals are to 1) build/maintain a community of psychosocial professionals working in pediatric IBD, 2) share resources/knowledge relevant to

pediatric IBD, 3) create resources/tools that we all need in the pediatric IBD space (for example, we are currently collaborating with parents to create a toolkit for caregiver coping in pediatric IBD), and 4) collaborate with other groups within ImproveCareNow (e.g., we have previously collaborated with the Patient Advisory Council).

While it is a professional group, there are no membership fees, we meet quarterly via Zoom and work on projects in be-

tween meetings and expect that SWAP engagement is ~1 hour per month. We are also working to have more continuing education credits for psychologists within the network.

Folks with any level of clinical work and/or interest in pediatric IBD psychosocial care are welcome, please reach out to Jennie at [jen-nie.david@nationwidechildrens.org](mailto:jen-nie.david@nationwidechildrens.org) if you want to learn more!



## Upcoming relevant webinar/conference:

ImproveCareNow's Community Conferences: The fall conference is in-person in late October ([https://www.improvecarenow.org/fall\\_2023\\_community\\_conference](https://www.improvecarenow.org/fall_2023_community_conference)) and the virtual conference is in April, 2024 ([https://www.improvecarenow.org/spring\\_2024\\_community\\_conference](https://www.improvecarenow.org/spring_2024_community_conference); registration cost for psychologists/providers is lower for the virtual option and registration for patients/parents is free for the virtual conference!)

## New Research

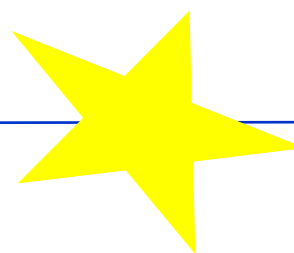
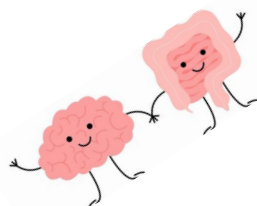
### Papers:

David, J.G., Michel, H.K., Dotson, J.L., Nwomeh, B.C., Boyle, B., Donegan, A., Maltz, R.M., McKillop, H.N., & Mackner, L. (2023). Psychosocial considerations in ostomy surgery for pediatric IBD patients. *Journal of Wound Ostomy Continence Nursing*, 50(2), 104-106. DOI: 10.1097/WON.0000000000000954.

David, J.G., Michel, H.K., Sejkora, E., Mackner, L. (2023). Understanding pediatric GI Providers' perceptions of and engagement with psychosocial providers, *JPGN Reports*, 4(2), e305, <https://doi.org/10.1097/pg9.0000000000000305>.

Huwe, M., Woolf, David, J.G., B., Shehzad, S., Seid, M., & Margolis, P. (2023). Conceptualizing and redefining successful patient engagement in patient advisory councils, *Learning Health Networks*, e10377.

Winnick, J.B., Jacobs, N., David, J.G., Moua, M.K., Saeed, S.A. (2023). Variability of psychosocial services within the ImproveCareNow learning health system: opportunities for optimization. *JPGN Reports*, 4(4), p e349. doi: 10.1097/PG9.0000000000000349.





[@pedsgastropsych](https://twitter.com/pedsgastropsych)

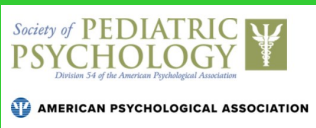


[PedsGastroPsych@gmail.com](mailto:PedsGastroPsych@gmail.com)



<https://pgsig.weebly.com/>

Do you have a feature idea for an upcoming newsletter? Email the PG SIG secretary, Cat Naclerio, directly at [Cathrine.Naclerio@childrenscolorado.org](mailto:Cathrine.Naclerio@childrenscolorado.org)



## New Research Continued

Piloting an innovative system-level intervention for pediatric patients with inflammatory bowel disease and social risk. Pages 134-146. Wagner, David V.; Stoeckel, Maggie; Hansen, Trevor; Muir, Linda; Harris, Michael A. <https://doi.org/10.1037/cpp0000481>

Disease-related distress in pediatric IBD: Development and validation of the Crohn's and Colitis Distress Scale. Pages 147-156. Stellway, Jacklyn E.; Cummings, Caroline; Paternostro, Jennifer; Stoeckel, Maggie; Muir, Linda; Harris, Michael A. <https://doi.org/10.1037/cpp0000444>

### Posters:

David, J.G., Huwe, M., Woolf, B., Shehzad, S., Seid, M., & Margolis, P. (2023). What does it mean to have true patient engagement? conceptualizing successful patient engagement in learning health systems. Poster presentation at Society for Pediatric Psychology Annual Conference.

Kamara, D., David, J., Ali, S., Al-Timimi, N., Parakala, M., McKillop, H., Paglinco, S., Crabtree, V. (2023). What patients experience and how healthcare professionals ask: An exploration of fatigue and sleep in pediatric IBD. Poster presentation at Society for Pediatric Psychology Annual Conference.

David, J.G., Hatley-Cotter, A., Berky, S. (2023). Developing resources for providers and families to reduce procedural anxiety with injections. Poster presentation at Society for Pediatric Psychology Annual Conference.

Winnick, J., Jacobs, N., David, J.G., Moua, M.K., Saeed, S. (2023). Availability of psychosocial services within the ImproveCareNow Learning Health System. Poster presentation at American Psychological Association Conference.

Berky, S., David, J.G., Hatley-Cotter, A., (accepted) USE OF QUALITY IMPROVEMENT TO DEVELOP AND EVALUATE INTERPROFESSIONAL RESOURCES FOR PROVIDERS AND FAMILIES TO REDUCE PROCEDURAL ANXIETY IN AN OUTPATIENT SPECIALTY CLINIC.

## On the Training & Job Front

**Psychology graduate students applying for internship and fellowship**, check out the Training Sites directory on the PG-SIG webpage. Both training sites and trainees should also keep an eye on listserv email for information about updating this directory with latest information. <https://pgsig.weebly.com/training--continuing-education.html>

Rome Foundation's Early Career group also keeps a list, which can be found here: [https://drive.google.com/drive/folders/1DVhWQ9LSe\\_pz2FiegP4\\_ii\\_v3\\_azXB1u?usp=sharing](https://drive.google.com/drive/folders/1DVhWQ9LSe_pz2FiegP4_ii_v3_azXB1u?usp=sharing)

**Children's Hospital Colorado** will be recruiting a **postdoctoral fellow** specializing in Eating Disorders & GI Psychology. This

is an exciting, new position to train future pediatric GI psychologists. Please contact Cat Naclerio ([Catherine.Naclerio@childrenscolorado.org](mailto:Catherine.Naclerio@childrenscolorado.org)) with any questions. You can find more information at <https://www.childrenscolorado.org/doctors-and-departments/departments/psych/mental-health-professional-resources/psychology-fellowship-programs/>

**Children's Specialized Hospital** in New Jersey is recruiting a **Pediatric GI psychologist**. As an integral member of our team, this psychotherapist will provide outpatient consultation and therapy services. You will work primarily with patients diagnosed with GI and other chronic illnesses, includ-

ing abdominal pain, celiac disease, inflammatory bowel disease, constipation, Disorders of the Gut-Brain Interaction (DGBIs) and diabetes. This position offers flexible schedules and telemed options. To apply, please visit: <https://www.rwjbarabashealthcareers.org/job/psychologist-outpatient-pediatrics-psychologist-eatontown-nj-243-42313/>

**The Yale Child Study Center**, in collaboration with the Section of Pediatric Gastroenterology & Hepatology, has an opening for a full-time **pediatric psychologist** to join our growing team of GI psychologists in YNH Children's Hospital. For questions, email Maggie Stoeckel [maggie.stoeckel@yale.edu](mailto:maggie.stoeckel@yale.edu).